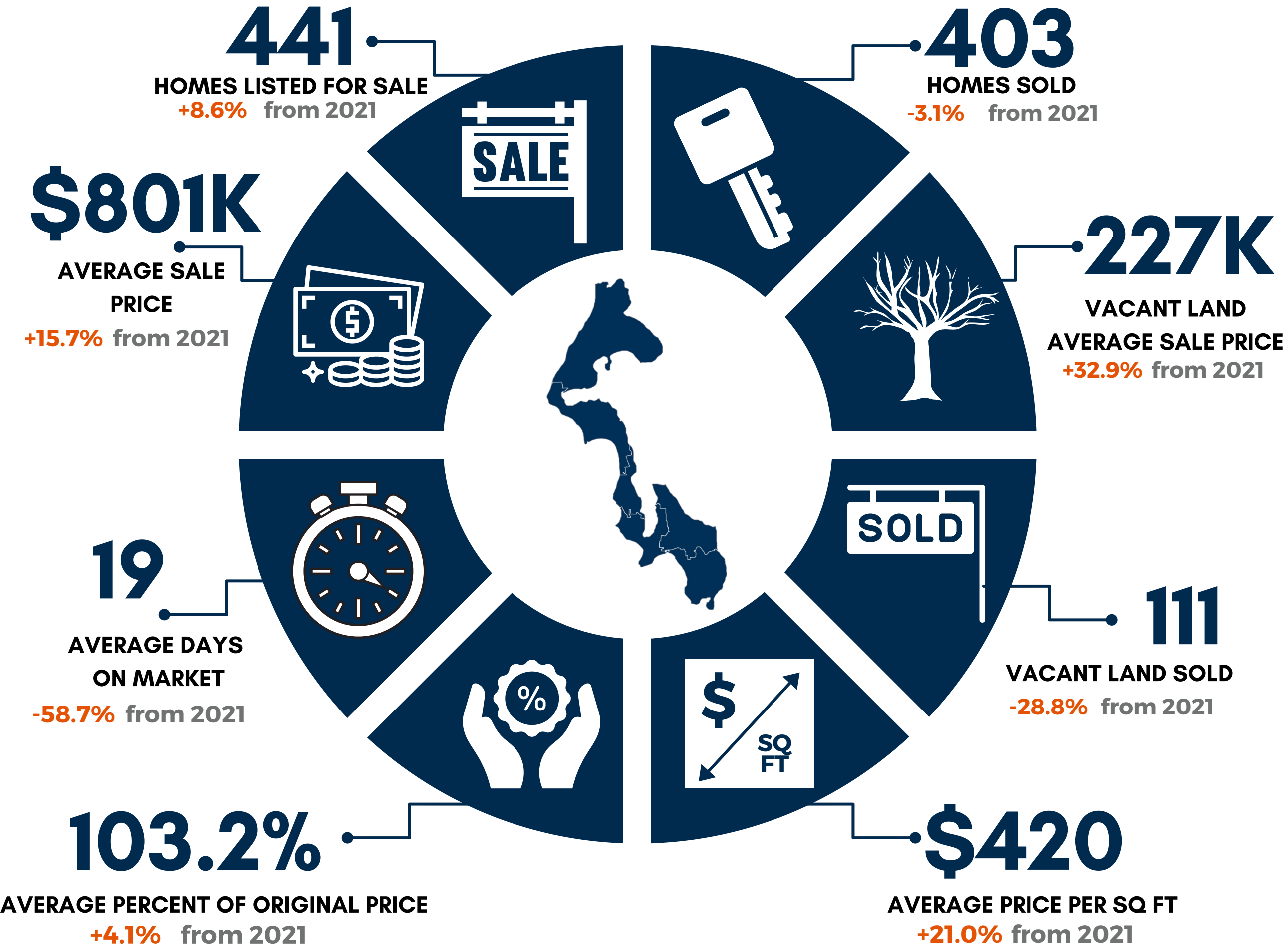


A satellite map of Whidbey Island and the surrounding region in western Washington. The island is highlighted in dark blue. Labels on the map include Fort Casey, Lake Goodwin, Tulalip, Langley, Freeland, Clinton, Mukilteo, Mats Mats, Chimacum, Port Hadlock-Irondale, Marrowstone Island, and Glen Cove. A highway shield for 101 is visible in the bottom left.

WHIDBEY ISLAND MARKET UPDATE

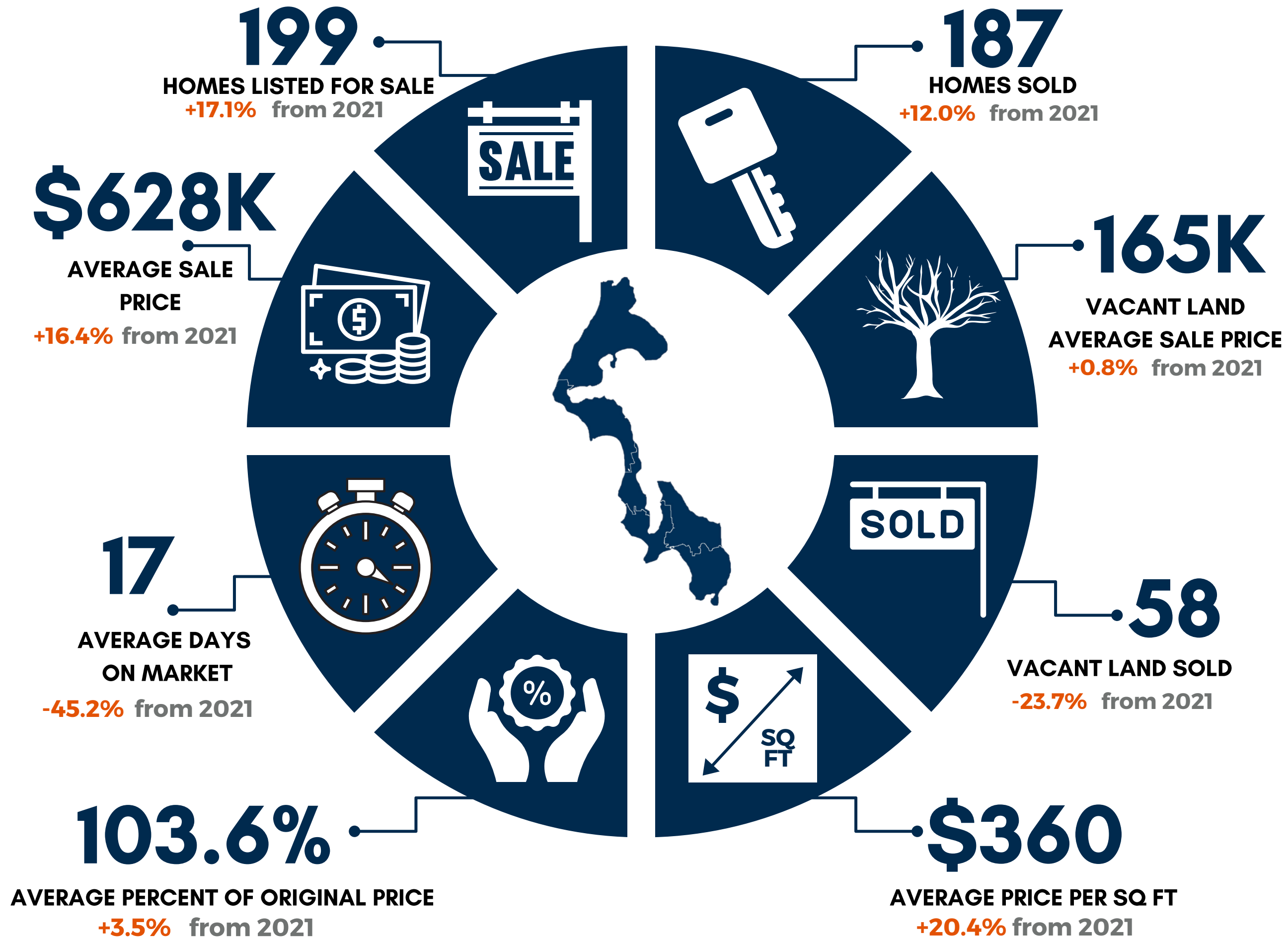
THE LAST 12 MONTHS
APRIL 2022

THE LAST 12 MONTHS APRIL 2022 SOUTH WHIDBEY



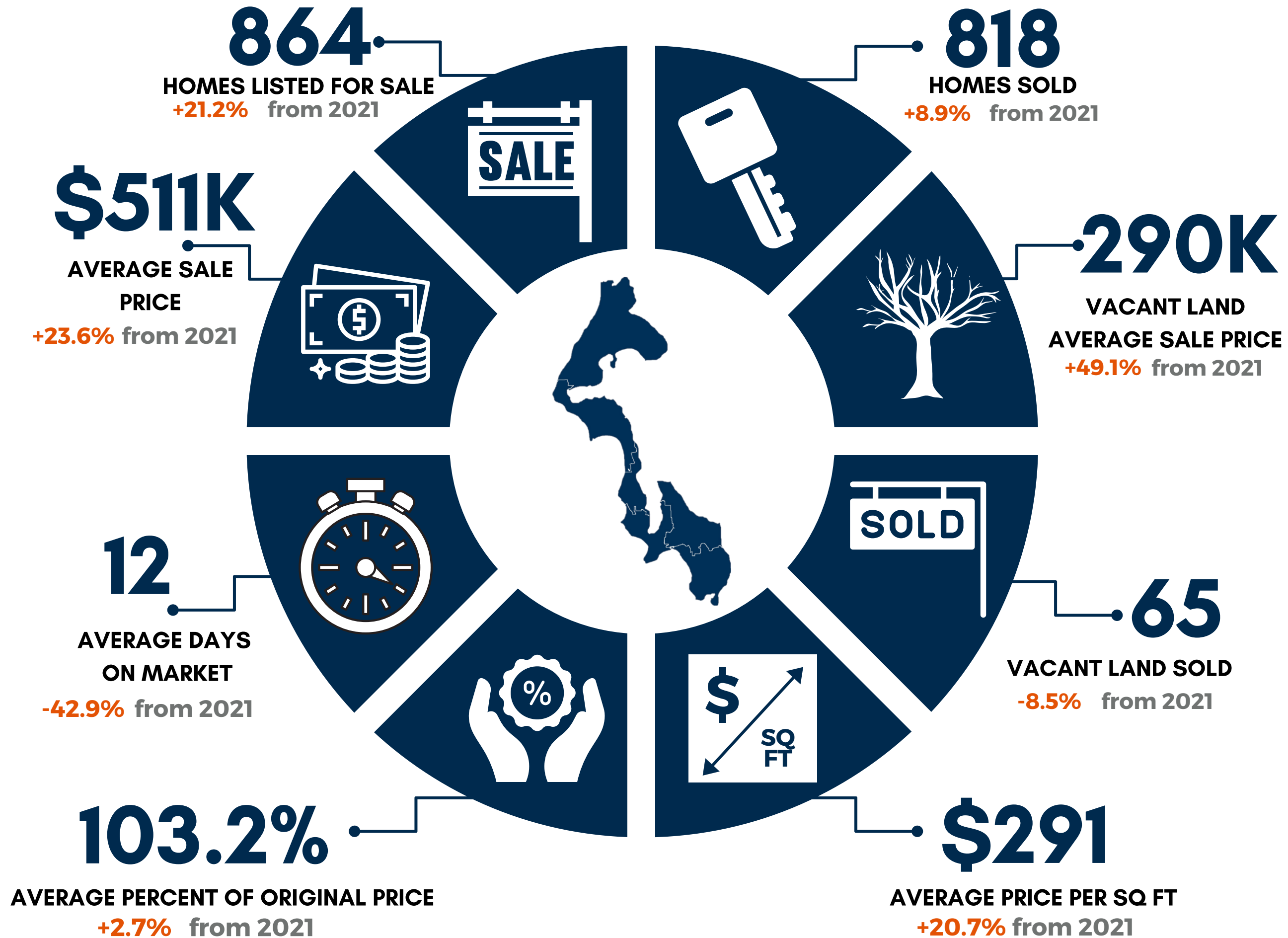
Stats are based on NWMLS area 811 and include residential & condo only with the exception of the stats on vacant land. May not represent all market activity.

THE LAST 12 MONTHS APRIL 2022 CENTRAL WHIDBEY



Stats are based on NWMLS area 812 and include residential & condo only with the exception of the stats on vacant land. May not represent all market activity.

THE LAST 12 MONTHS APRIL 2022 NORTH WHIDBEY



Stats are based on NWMLS area 813 and include residential & condo only with the exception of the stats on vacant land. May not represent all market activity.



Windermere

REAL ESTATE

Whidbey Island

**Contact us if we can help
you in ANY way**

#WeAreWhidbey

